



## Switchgear type SZR-3

for rated voltage of 500V



Switchgear type SZR-3 is an electrical device designed for use in methane-free without coal dust explosion hazard underground mining pits as well as on the ground.

Switchgear type SZR-3 is designed for connecting and switching-on receivers to mine 3-phase grid with insulated star point on the transformer (IT system) for the rated grid supply voltage of 230V in automatic power backup switching-on after a power failure of basic supply (automatic reserve switching).

The receivers are connected to the switchgear through the cable gland.

Switchgear SZR-3 is equipped with power protection against short-circuits and reduction of earth resistance.

### TECHNICAL DATA:

ingress protection  
rated supply voltage  
rated current  
dimensions  
weight

IP54  
230V,50Hz  
700A  
2000 x 2200 x 350mm (H x W x D)  
350kg

## CONSTRUCTION

The switchgear consists of a housing mounted on a framework fitted with brackets. Frame construction allows for hanging it on the pit wall.

## MODE OF OPERATION

Switchgear SZR-3 may operate in two modes: AUTOMATIC or MANUAL. Switchgear let switching on the reserve power supply in AUTOMATIC mode. After the power failure in the main power supply it is switched-off and the reserve power supply is switched on. On returning of the main power supply, the reserve power supply is reconnected again. MANUAL mode enables on individual operation any of outlets.

## SCHEMATIC DIAGRAM

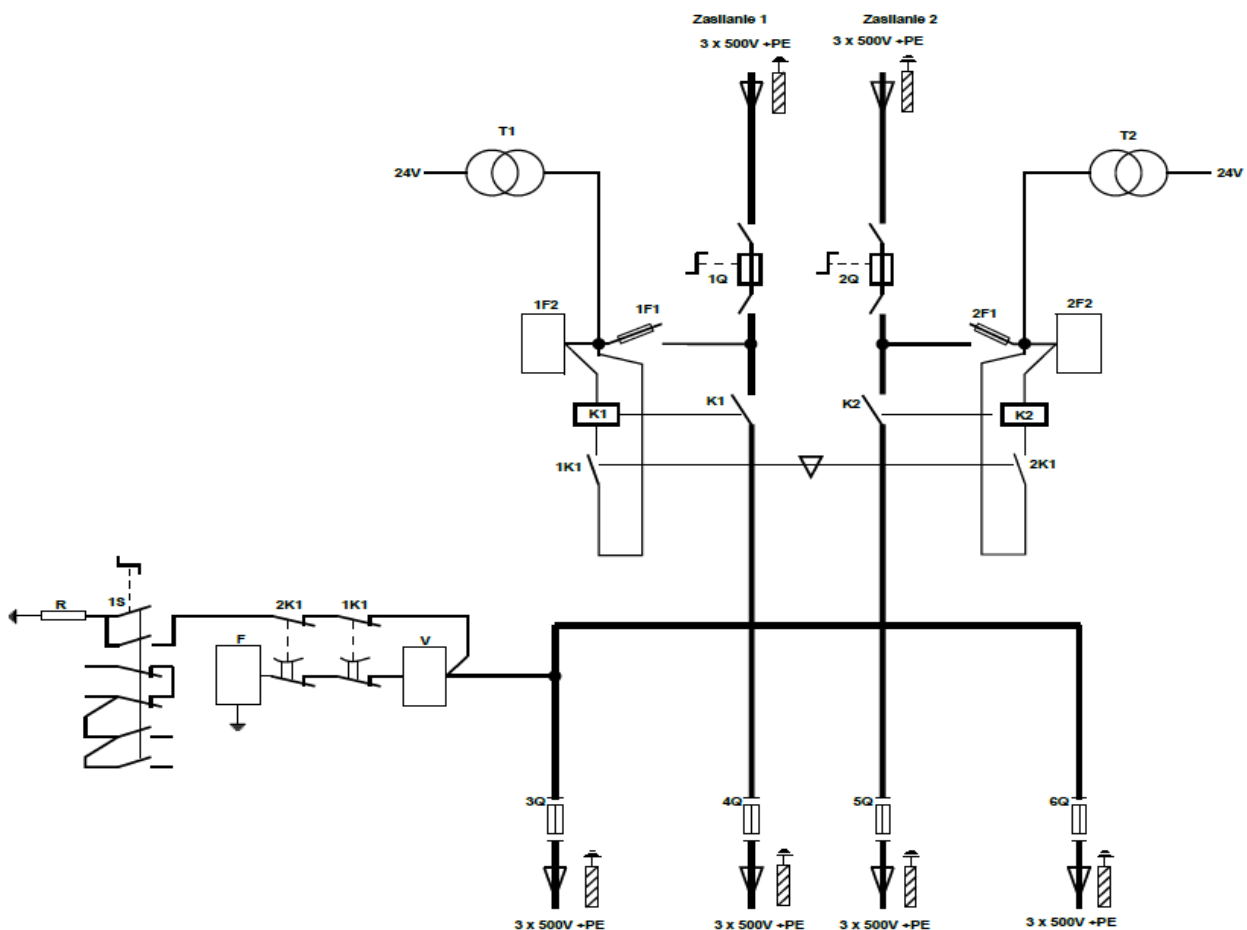
### Legend:

Zasilanie 1,2 3x500V – Power supply 1,2 3x500VAC

K1,K2 – Contactors

1Q,2Q – Fuse disconnectors

3Q,4Q,5Q,6Q - Fuses



Orders should be submitted in writing or by fax to the address:

 **Instal-Service PL**

Spółka z ograniczoną odpowiedzialnością  
Spółka komandytowa

58-506 Jelenia Góra, ul. Wrocławska 15a  
tel. (+48 075) 64-57-950  
fax. (+48 075) 64-57-951  
e-mai: instal@instal-service.pl